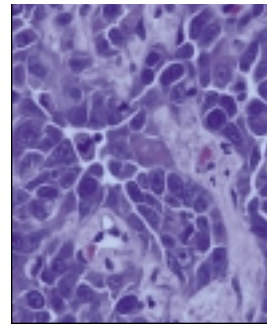


SELECTED CLINICAL RESEARCH PROTOCOLS RELATING TO COLORECTAL CANCER



Prevention

CCUM-9941, NCI-P00-0144, UMN-9941 Phase I Study of Curcumin for the Chemoprevention of Colon Cancer

Chairperson: Dean E. Brenner, MD. Telephone: 1-800-865-1125. Lead organization: University of Michigan Comprehensive Cancer Center. Age range: 18 and over.

MDA-ID-00109, NCI-P02-0219 Phase II Randomized Study of Celecoxib With or Without Eflornithine for the Prevention of Colorectal Cancer in Participants With Familial Adenomatous Polyposis of the Colorectum

Chairperson: Frank Sinicrope, MD. Telephone: 713-794-5073; 1-800-392-1611. Lead organization: University of Texas - MD Anderson Cancer Center. Age range: 18 to 65.

UUMC-IRB-5999-96, NCI-H01-0079 Phase II/III Randomized Study of Exisulind as Chemoprevention of Duodenal Polyps in Patients With Familial Adenomatous Polyposis

Chairperson: James Anthony DiSario, MD. Telephone: 801-581-7802; 877-585-0303. Lead organization: Huntsman Cancer Institute. Age range: 18 to 80.

UCIRVINE-97-05, NCI-P00-0150 Phase IIB Randomized Study of Eflornithine (DFMO) and Sulindac in the Prevention of Colorectal Carcinoma in Patients With Previously Resected Colorectal Adenoma

Chairperson: Frank Meyskens, MD. Telephone: 714-456-6310. Lead organization: Chao Family Comprehensive Cancer Center. Age range: 40 to 80.

Diagnosis/Treatment

MSKCC-99048, NCI-G00-1695 Diagnostic Study of Fludeoxyglucose F 18 Positron Emission Tomography and CT Imaging in Patients With Locally Advanced Primary Rectal Cancer Undergoing Multimodality Management

Chairperson: Jose G. Guillem, MD. Telephone: 212-639-8278. Lead organization: Memorial Sloan-Kettering Cancer Center. Age range: 18 and over.

NU-9915, NCI-G00-1736 Diagnostic Study of Computed Tomographic Colonography vs Colonoscopy in the Detection of Colorectal Polyps or Cancer

Chairperson: Frank Miller, MD. Telephone: 312-908-5250. Lead organization: Robert H. Lurie Comprehensive Cancer Center, Northwestern University. Age range: over 18.

Advanced Colorectal Cancer

Phase II

ROCHE-ML16323 Phase II Study of Capecitabine and Irinotecan in Patients With Locally Advanced, Locally Recurrent, or Metastatic Colorectal Cancer

Chairperson: Dvorit Samid, PhD. Telephone: 973-235-5000; 1-800-678-MTRA. Lead organization: Hoffmann-La Roche, Inc. Age range: 18 and over.

SWOG-S0030 Phase II Study of Capecitabine in Elderly Patients With Unresectable Metastatic or Recurrent Colorectal Cancer

This list of clinical research protocols relating to colorectal cancer is compiled for your convenience.

For more information on these protocols, please call PDQ, a service of the National Cancer Institute, at 1-800-4-CANCER. The PDQ Web site is accessible at http://www.cancer.gov/clinical_trials.

A searchable Web site developed by the National Library of Medicine is also available at <http://clinicaltrials.gov>.

Chairperson: Heinz-Josef Lenz, MD. Telephone: 323-865-3955; 1-800-872-2273. Lead organization: Southwest Oncology Group. Age range: 70 and over or 18 to 59.

UCLA-0209047, Phase II Study of GW572016 as Second-Line Therapy in Patients With Stage IV Colorectal Cancer Refractory to Irinotecan and Fluorouracil

Chairperson: Joel Randolph Hecht, MD. Telephone: 310-825-5268. Lead organization: Jonsson Comprehensive Cancer Center, UCLA. Age range: 18 and over.

NCCTG-N9945, NSABP-CI-66 Phase II Study of Hepatic Arterial Infusion With Floxuridine and Dexamethasone Followed By Systemic Therapy With Oxaliplatin and Capecitabine in Patients With Surgically Resected Liver Metastases from Primary Colorectal Carcinoma

Chairperson: Steven Alberts, MD. Telephone: 507-284-4918. Lead organization: North Central Cancer Treatment Group. Age range: not specified.

CHNMC-IRB-94080, NCI-V96-1031 Phase II Study of Hepatic Resection Followed by Adjuvant Portal Vein Infusion of Floxuridine Plus Systemic Fluorouracil/Leucovorin calcium in Metastatic Colorectal Carcinoma

Chairperson: Lucille A. Leong, MD. Telephone: 626-359-8111; 1-800-826-4673. Lead organization: City of Hope Comprehensive Cancer Center. Age range: physiologic 18 to 70.

LAC-USC-3C981, NCI-G99-

1513 Phase II Study of Irinotecan and Genetic Study of UGT1 (UGT1A1) Polymorphism in Patients With Colorectal Cancer

Chairperson: Heinz-Josef Lenz, MD. Telephone: 323-865-3955; 1-800-872-2273. Lead organization: USC/Norris Comprehensive Cancer Center and Hospital. Age range: 18 and over.

CLB-80002, SWOG-C80002 Phase II Study of Local Excision With or Without Adjuvant Chemotherapy and Radiotherapy in Patients With Stage I Rectal Cancer

Chairperson: Ronald Bleday, MD. Telephone: 617-732-8460. Lead organization: Cancer and Leukemia Group B. Age range: 18 and over.

CWRU-1298, NCI-89 Phase II Study of O6-Benzylguanine and Carmustine in Patients With Metastatic Colorectal Carcinoma

Chairperson: Smitha Krishnamurthi, MD. Telephone: 216-844-1006; 1-800-641-2422. Lead organization: Ireland Cancer Center. Age range: 18 and over.

CWRU-040106, UWASH-1200, CWRU-UWMC-1200, NCI-G01-2045, UWASH-440E-ONC-0020-250 Phase II Study of Surgical Resection With or Without Radiofrequency Ablation Followed By Irinotecan in Patients With Hepatic Metastases From Primary Colorectal Carcinoma

Chairperson: Kevin Billingsley, MD. Telephone: 206-543-9322. Lead organization: University of Washington School of Medicine. Age range: 18 and over.

NCI-99-C-0102, PCI-020901

Phase II Randomized Adjuvant Study of Oral Thalidomide in Patients With Previously Resected Recurrent Colorectal Cancer

Chairperson: Steve Libutti, MD. Telephone: 301-496-5049. Lead organization: Center for Cancer Research. Age range: 18 and over.

EORTC-05011 Phase II Randomized Study of Chronomodulated Irinotecan, Fluorouracil, Leucovorin Calcium, and Oxaliplatin as First- or Second-Line Therapy in Patients With Locoregional or Metastatic Colorectal Cancer

Chairperson: Carlo Garufi, MD. Telephone: 0039-6-49852214. Lead organization: EORTC Chronotherapy Group. Age range: over 18.

CHNMC-IRB-94080, NCI-V96-1031 Phase II Study of Hepatic Resection Followed by Adjuvant Portal Vein Infusion of Floxuridine plus Systemic Fluorouracil/Leucovorin calcium in Metastatic Colorectal Carcinoma

Chairperson: Lucille A. Leong, MD. Telephone: 626-359-8111; 1-800-826-4673. Lead organization: City of Hope Comprehensive Cancer Center. Age range: physiologic 18 to 70.

NCCTG-N014A Phase II Study of Oxaliplatin, Fluorouracil, Leucovorin Calcium, and Cetuximab in Patients With Unresectable Hepatic Metastases Secondary to Metastatic Colorectal Adenocarcinoma

Chairperson: Steven R. Alberts, MD. Telephone: 507-284-4918. Lead organization: North Central Cancer Treatment Group. Age range: 18 and over.

Phase III

CLB-9481, E-C9481 Phase III Randomized Study of Hepatic Artery Infusion of Floxuridine, Leucovorin Calcium (CF), and Dexamethasone Versus IV Fluorouracil and IV CF in Patients With Hepatic Metastases Secondary to Colorectal Cancer

Chairperson: Nancy E. Kemeny, MD. Telephone: 212-639-8068. Lead organization: Cancer and Leukemia Group B. Age range: 18 and over.

NCCTG-N9841, E-N9841, SWOG-N9841 Phase III Randomized Study of Irinotecan Versus Oxaliplatin, Fluorouracil, and Leucovorin Calcium in Patients With Advanced Colorectal Cancer Previously Treated With Fluorouracil

Chairperson: Henry Clement Pitot, MD. Lead organization: North Central Cancer Treatment Group. Telephone: 507-284-2111. Age range: 18 and over.

NCI-01-C-0093 Phase III Randomized Study of Regional and Systemic Chemotherapy With or Without Isolated Hepatic Perfusion With Melphalan in Patients With Unresectable Colorectal Cancer Metastatic to the Liver

Chairperson: Richard Alexander, MD. Telephone: 301-496-2195. Lead organization: Center for Cancer Research. Age range: 18 and over.

NCCTG-971151 Phase III Randomized Study of Shark Cartilage (Benefin) in Patients With Advanced Colorectal or Breast Cancer

Chairperson: Charles Loprinzi, MD. Telephone: 507-284-2111. Lead organization: North Central Cancer

Treatment Group. Age range: 18 and over.

CRC-TU-COX2, EU-20054 Phase III Randomized Adjuvant Study of Rofecoxib in Patients With Previously Resected Stage II or III Colorectal Cancer

Chairperson: David J. Kerr, MD. Telephone: 0121-414-3802. Lead organization: Cancer Research Campaign Trials Unit-Birmingham. Age range: 18 and over.

NCRI-QUASAR1, EU-99053, UKCCCR-QUASAR1 Phase III Randomized Study of Adjuvant Chemotherapy With L-leucovorin and Fluorouracil Versus Observation in Patients With Resected Colorectal Cancer

Chairperson: Norman Williams, MD. Telephone: 44-20-7377-70. Lead organization: National Cancer Research Institute. Age range: 18 and over.

GRECCR-03, EU-20201 Phase III Randomized Study of Adjuvant Chronomodulated Versus Standard Schedule Fluorouracil and Leucovorin Calcium With or Without Carboplatin in Patients With Completely Resected Stage IIB or III Colon Cancer

Chairperson: Christian N. J. Focan, MD. Telephone: 32-4-224-8990. Lead organization: Groupe Regional d'Etudes du Cancer Colorectal - Belgium. Age range: 18 and over.

EORTC-40963 Phase III Randomized Study of Adjuvant High Dose Fluorouracil With or Without Leucovorin Calcium Versus Standard Fluorouracil With Leucovorin

Calcium Following Curative Radical Resection in Patients With Stage III Adenocarcinoma of the Colon

Chairperson: Jacques A. Wils, MD. Telephone: 475-382466. Lead organization: EORTC Gastrointestinal Tract Cancer Group. Age range: 18 and over.

MRC-CR08-FOCUS, EU-20038 Phase III Randomized Study of Fluorouracil With Leucovorin Calcium and Either Irinotecan or Oxaliplatin in Patients With Unresectable Metastatic Colorectal Cancer

Chairperson: M. T. Seymour, MD. Telephone: 44-207-670-4761. Lead organization: Saint Bartholomew's Hospital. Age range: 18 and over.

NCCTG-N9841 Phase III Randomized Study of Irinotecan Versus Oxaliplatin, Fluorouracil, and Leucovorin Calcium in Patients With Advanced Colorectal Cancer Previously Treated With Fluorouracil

Chairperson: Henry Clement Pitot, MD. Telephone: 507-284-2111. Lead organization: North Central Cancer Treatment Group. Age range: 18 and over.