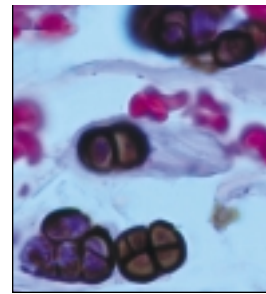


A SONOGRAPHICALLY WELL-DELINEATED MASS IN THE KIDNEY

Marla R. Hersh, MD

From the Department of Radiology at H. Lee Moffitt Cancer Center & Research Institute, Tampa, Fla.



Case Description:

Fig 1 shows an ultrasound image of a 31-year-old man who presented with suprapubic pain, perineal pain, and dark urine.

The most likely diagnosis is:

1. simple renal cyst
2. angiomyelolipoma
3. renal oncocytoma
4. complex renal cyst

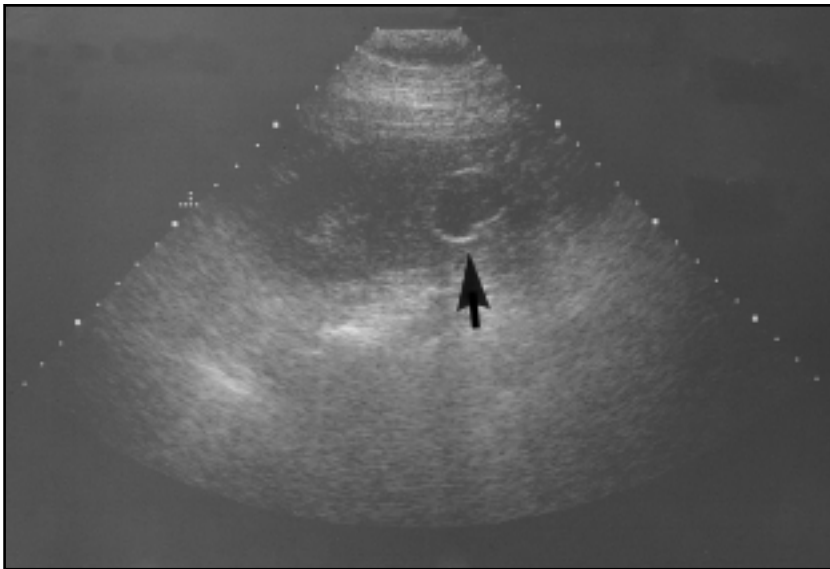


Fig 1. — Ultrasound of the left kidney showing a well-delineated hypoechoic mass with internal echoes and a hyperdense rim (arrow).

This regular feature will enhance your knowledge of imaging technology in oncologic diagnosis, treatment, and evaluation.

Imaging in Oncology

Click here to go to the answer and discussion.